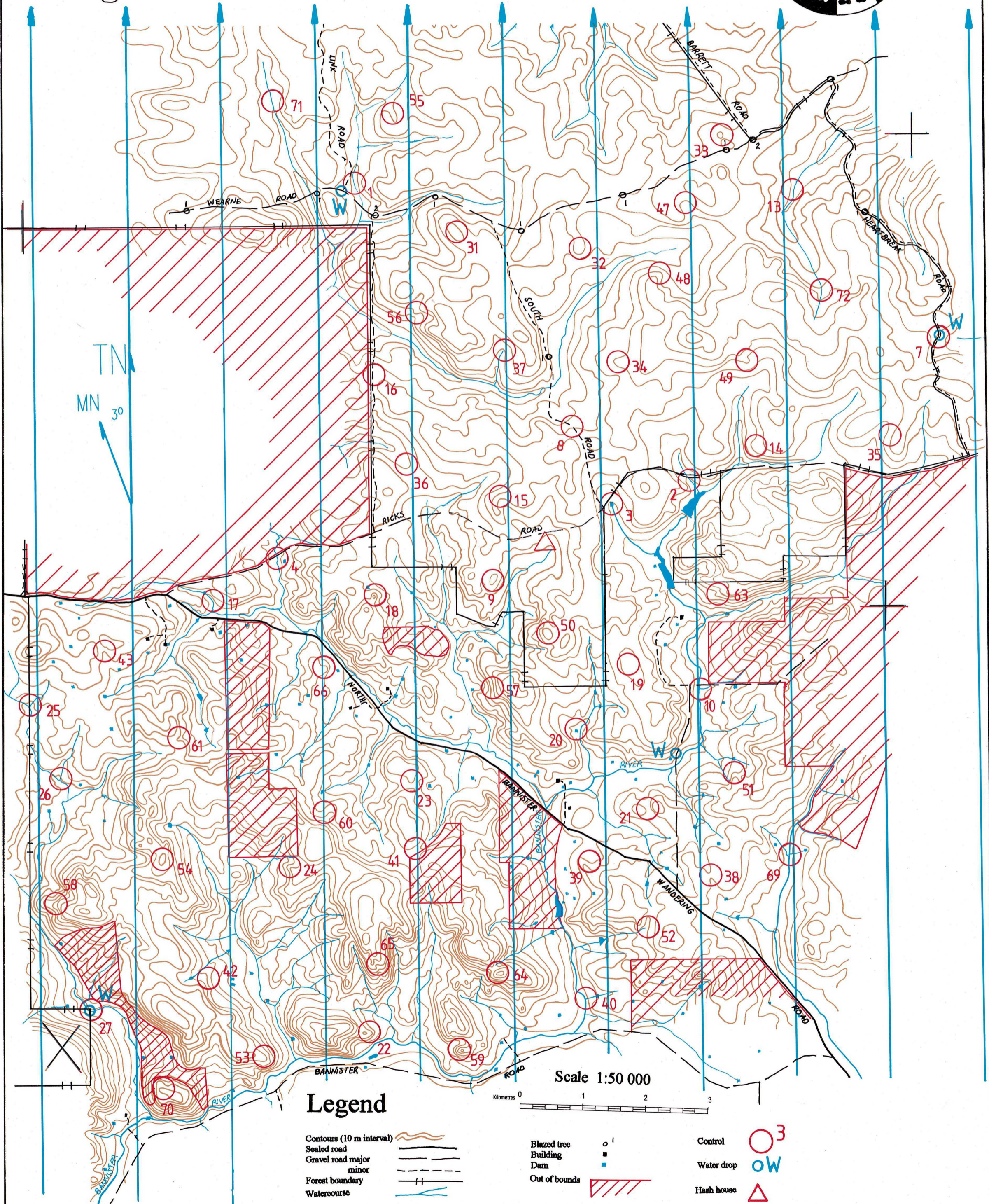




Shepherd's Scramble

Spring Rogaine October 10th 1992



Legend

- | | | | | | |
|--------------------------|--|---------------|--|------------|--|
| Contours (10 m interval) | | Blazed tree | | Control | |
| Sealed road | | Building | | Water drop | |
| Gravel road major | | Dam | | Haah house | |
| minor | | Out of bounds | | | |
| Forest boundary | | | | | |
| Watercourse | | | | | |

Thank you to CALM for the use of the bush on this map and to all of the private land owners that allowed us to use their land.

Thank you to John Braid, Peter Watson and Ron Lockley for their assistance in the production of this map.

Setters: Graham Braid, Giuseppe Russo and Dharam Apanah
Vettors: Roy Stone, Warren Smith, Martin Gray and David La Cava
Cartography: Graham Braid

Shepherd's Scramble October 10 1992 Spring 12 hr Rogaine
Control Descriptions

<u>Control Number</u>	<u>Points</u>	<u>Description</u>	<u>Control Number</u>	<u>Points</u>	<u>Description</u>
1	20	The stream bend	38	50	A fence junction in the saddle, 110m at 250°
2	20	A fence, the stream junction	39	50	A 1.5m boulder cluster
3	20	The dam	40	50	The vague stream junction
4	20	The stream/track junction, then 60m at 170°	41	50	A fence corner at the head of the gully, then 90m at 320°
7	30	The track bend, 90m at 290°	42	50	A gully
8	30	The track bend	43	50	Head of the gully
9	30	The knoll	47	60	Top of the gully, on a very vague track
10	30	A 10m x 12m rock surface	48	60	The spur
13	40	South end of a 50m x 50m clearing	49	60	The spur
14	40	The spur	50	60	Top of the (bare) knoll, then 90m at 144°
15	40	The ridge	51	60	North tip of the rocky spur
16	40	A bend in the track, 115m at 114°	52	60	The bend in the gully, on a 2m boulder cluster
17	40	The stream bend	53	60	The spur
18	40	The knoll	54	60	The knoll
19	40	The broad knoll	55	70	The shallow gully
20	40	The dam	56	70	The spur
21	40	West side of the saddle	57	70	The gully
22	40	A knoll on the east part of the spur	58	70	Rocky part of the spur
23	40	The rocky spur	59	70	A 50m x 50m rock surface, north end
24	40	The spur	60	70	A gully at the back of a dam
25	40	The stream junction	61	70	Head of the gully
26	40	The stream junction	63	80	The spur
27	40	The stream bend	64	80	West end of the knoll
31	50	The knoll	65	80	Head of the gully
32	50	The spur	66	80	Middle of a 3m boulder
33	50	The northern knoll, on a six pronged tree	69	100	East side of the stream junction
34	50	The broad spur	70	100	North-west end of the summit
35	50	South end of a 200m x 200m clearing	71	100	The stream
36	50	Head of the broad gully	72	100	The bend in the stream
37	50	Head of the stream			

Note: North lines on the map are true north. Add 3° to bearings for use with magnetic north.